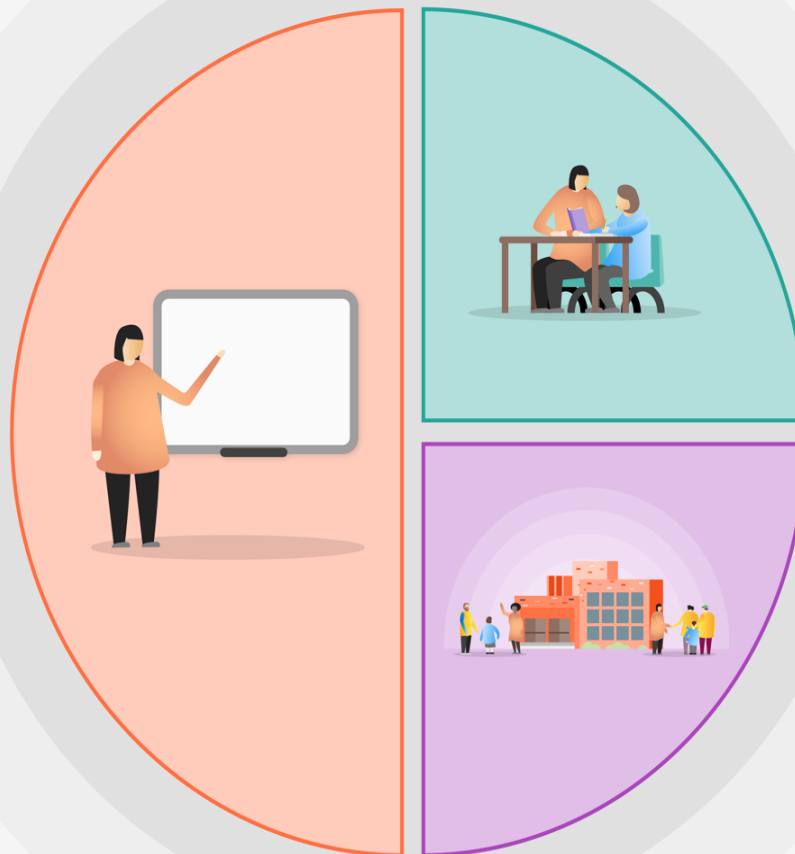


# Pupil Premium Strategy – Tiered model Oldbury Park Primary School

## 1 Teaching

- The curriculum offer balances knowledge and skills and ensures children know more, retain more and so can do more within and across subjects.
- Support Trust Teaching & Learning cycle delivery model with sustained, high quality CPD.
- Support Trust Teaching & Learning cycle with sustained CPD on expert teacher input (EEF Explicit teaching) including quality explanation and modelling.
- Sustained, high quality CPD on Reading Comprehension strategies, targeted vocabulary instruction and developing disciplinary reading and vocabulary development
- Developing Trust wide Oracy strategy (providing opportunities for structured purposeful talk)
- Language rich environment
- Phonics programme (RWI) development across EYFS, KS1 and KS2.
- Implementation of Active Listening across school.
- Implementation of Word Aware strategies across Ks1 and 2 (explicitly teach children strategies to learn new words).



## 2 Targeted academic support

- Specific Maths strategies and interventions to support struggling mathematicians at UKS2.
- Specific Writing strategies, support and interventions to support struggling writers at UKS2.
- Specific reading strategies and activities to support struggling readers and to support Reading Culture

## 3 Wider strategies

- Developing cultural capital, building resilience and confidence - KASE
- Thrive approach
- Attendance and PA - expectation that all vulnerable learners are in school full-time, experiencing quality first teaching and support with follow-up. Vulnerable learners not in school receive support to catch up on their return.
- Supporting specific groups of parents to support learning
- Engaging with parents – Family Room / Parent Reps/Forums